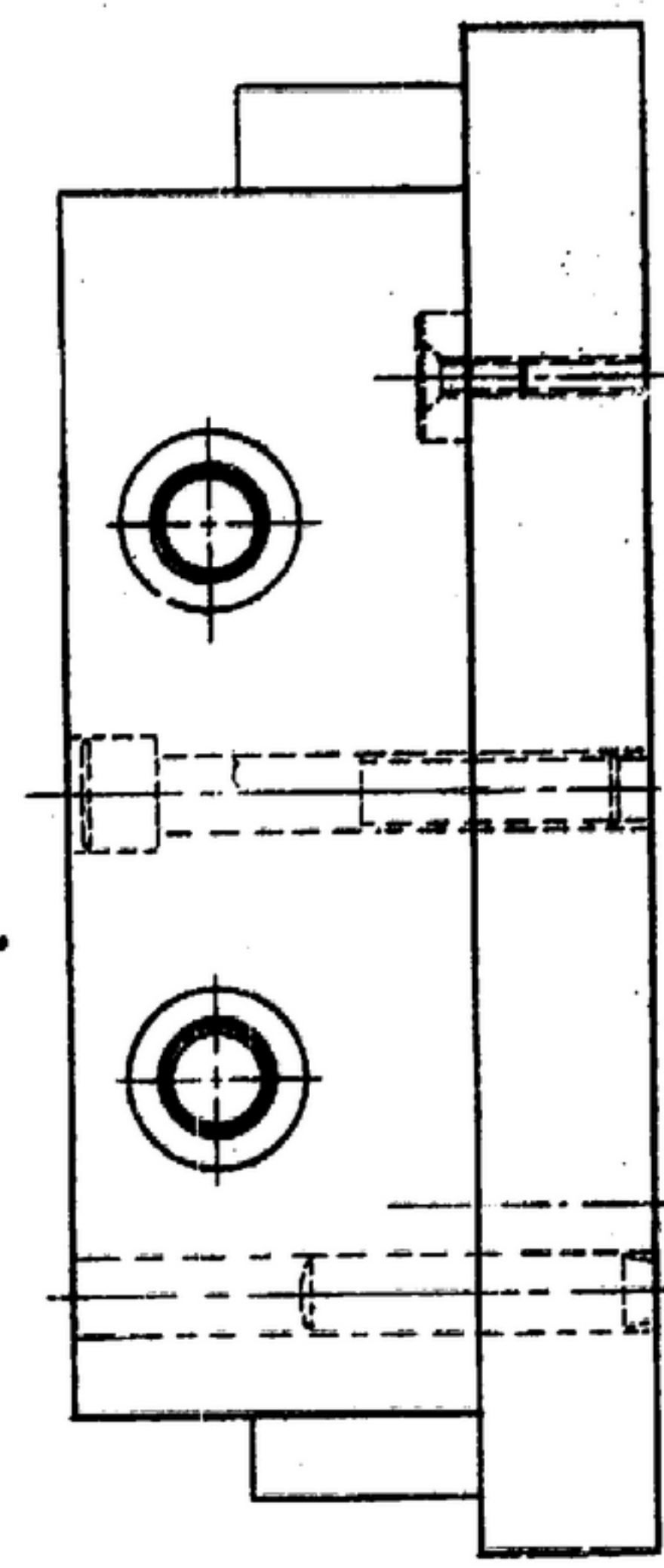
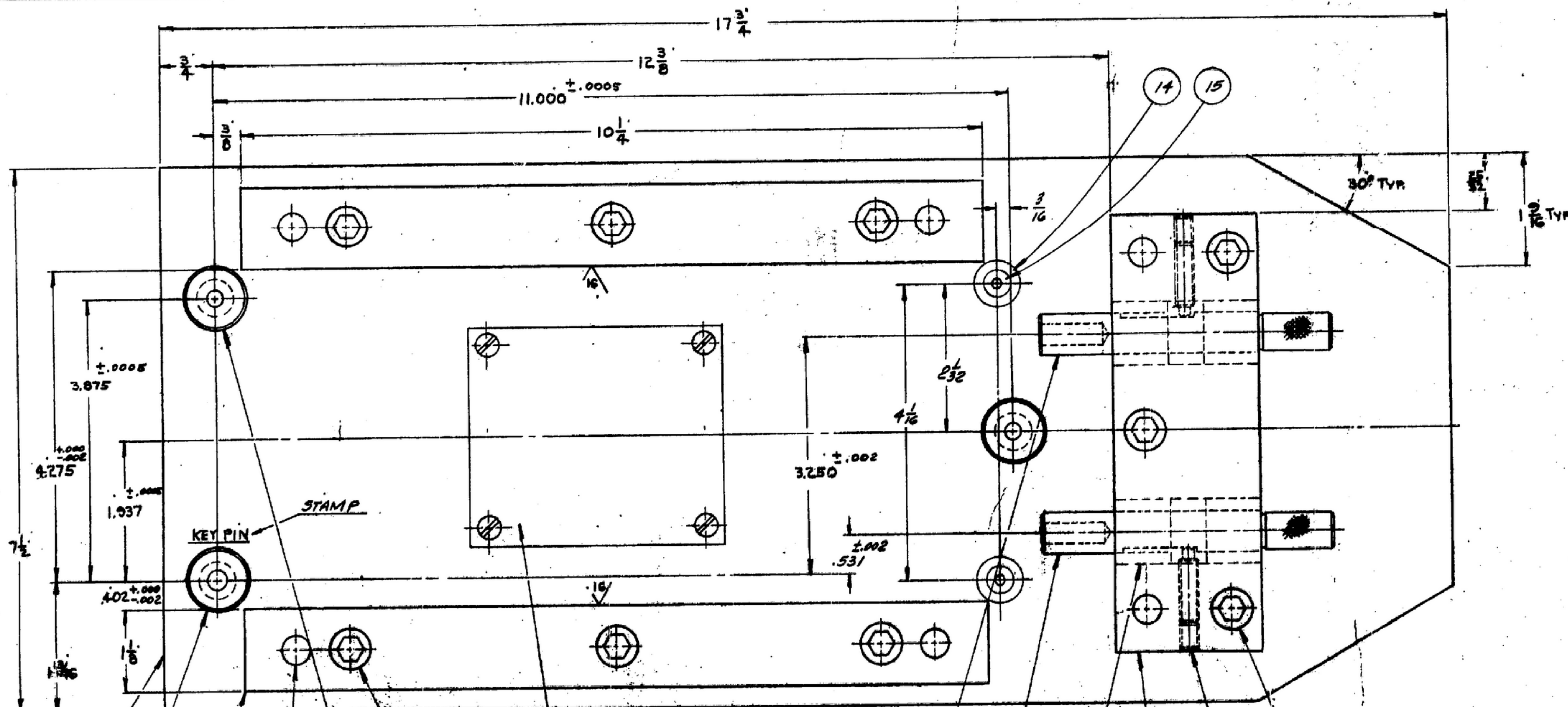


SYM	DESCRIPTION	DATE	APPROVAL
-----	-------------	------	----------

NOTE:
*FOR INFORMATION ONLY, CONTRACTOR MAY AT HIS OPTION DEVIATE FROM THESE PROCESS DETAILS



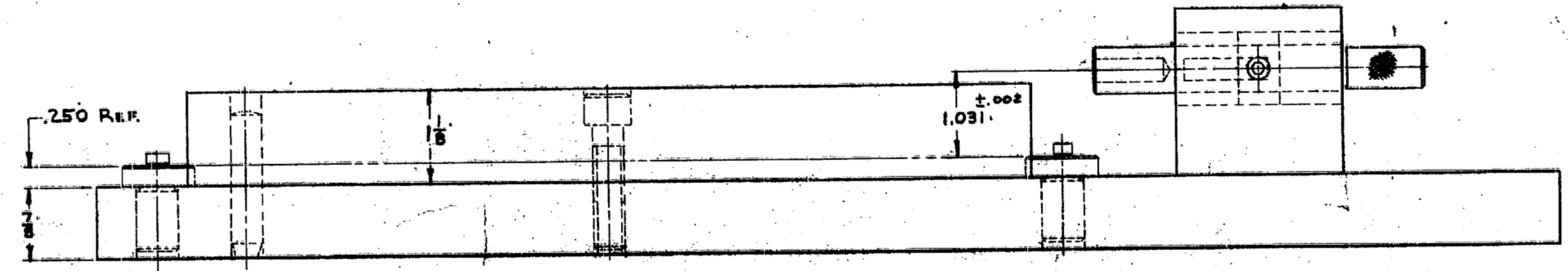
- NOTES
- SUPPLIED BY:
ACME INDUSTRIAL COMPANY
200 N. LAFLIN STREET
CHICAGO 7, ILL. INP. OR EQUAL
MONROE 6-4122
 - SUPPLIED BY WEST PRINT MANUFACTURING CO
26935 WEST SEVEN MILE
DETROIT 19, MICHIGAN OR EQUAL
 - THIS GAGE WILL CHECK SM-D-57316
 - A PROTECTIVE FINISH PER SPEC. MIL-G-10344 (ORD) SHALL BE APPLIED TO NON-FUNCTIONING, NON-GAGING & NON-LOCATING SURFACES TO PREVENT CORROSION. BLACK OR GRAY COLORS ARE PREFERRED.

ENGRAVE:
R-350A/URR
RECEIVER
FINAL ASSY. I.F.
CHECK LOC. OF SHAFTS
F.M.T.G. HOLES & OVERALL
WIDTH OF I.F. CHASSIS.
SIG. C. INSP.
57316
(MFR'S NAME OR SYMBOL)

LAP ID. TO 3/16 IN.
S.F. IN ASSEM.

STEEL-NORMALIZED & TEMPERED
PER SPEC. QQ-S-633
Rock 'C' CO-03.

STEEL-NORMALIZED PER
SPEC. QQ-S-633



ITEM	QTY	PART NO.	DESCRIPTION	MATL	MATL SPEC	NOTES
15	2		15 7/8 X 1/4 PLAT HA SCR			
14	2		14 WEDG SH EXT BUTTW 20-20A			2
13	3		13 3/16 X 1/8 X 2 1/2 SCH 40 SCR			
12	2		12 1/4-20 X 1 1/2 SCH 40 SCR			
11	2		11 1/4-20 X 1 1/2 SCH 40 SCR			
10	1		10 BLOCK 2 X 2 X 6			
9	4		9 A.S.A. WASH. 1/2 X 1/4 X 1/4			1
8	1		8 PIN 1/16 DIA. X 4	STEEL		
7	1		7 PIN 3/16 DIA. X 4			
6	6		6 3/16 X 1/8 X 1 1/2 SCH 40 SCR			
5	2		5 PIN 1/8 DIA. X 1 1/4			
4	6		4 3/8 DIA. X 1 3/4 DWEL			
3	2		3 RAIL 1/8 SQ. X 10 1/2			
2	1		2 PIN 1/8 DIA. X 1 1/4			
1	1	SM-D-57316-1	1 PLATE 7/8 X 7 1/2 X 17 1/2			

UNLESS OTHERWISE SPECIFIED
DIMENSIONS ARE IN INCHES
TOLERANCES ON FRACTIONS DECIMALS ANGLES
± .002

ORDER # 08719-PH-55-33

SIGNAL CORPS

REVIEWED *PME*
APPROVED *M.H. PNE*

DATE 4-10-55

SCALE FULL

APPLICATION

PIN GAGE

To CHECK BAND WIDTH CENTRAL SHAFTS IN RELATION TO MOUNTING HOLES IN I.F. SUB-CHASSIS & CHECK OVERALL MAXIMUM DIMENSION OF CHASSIS.

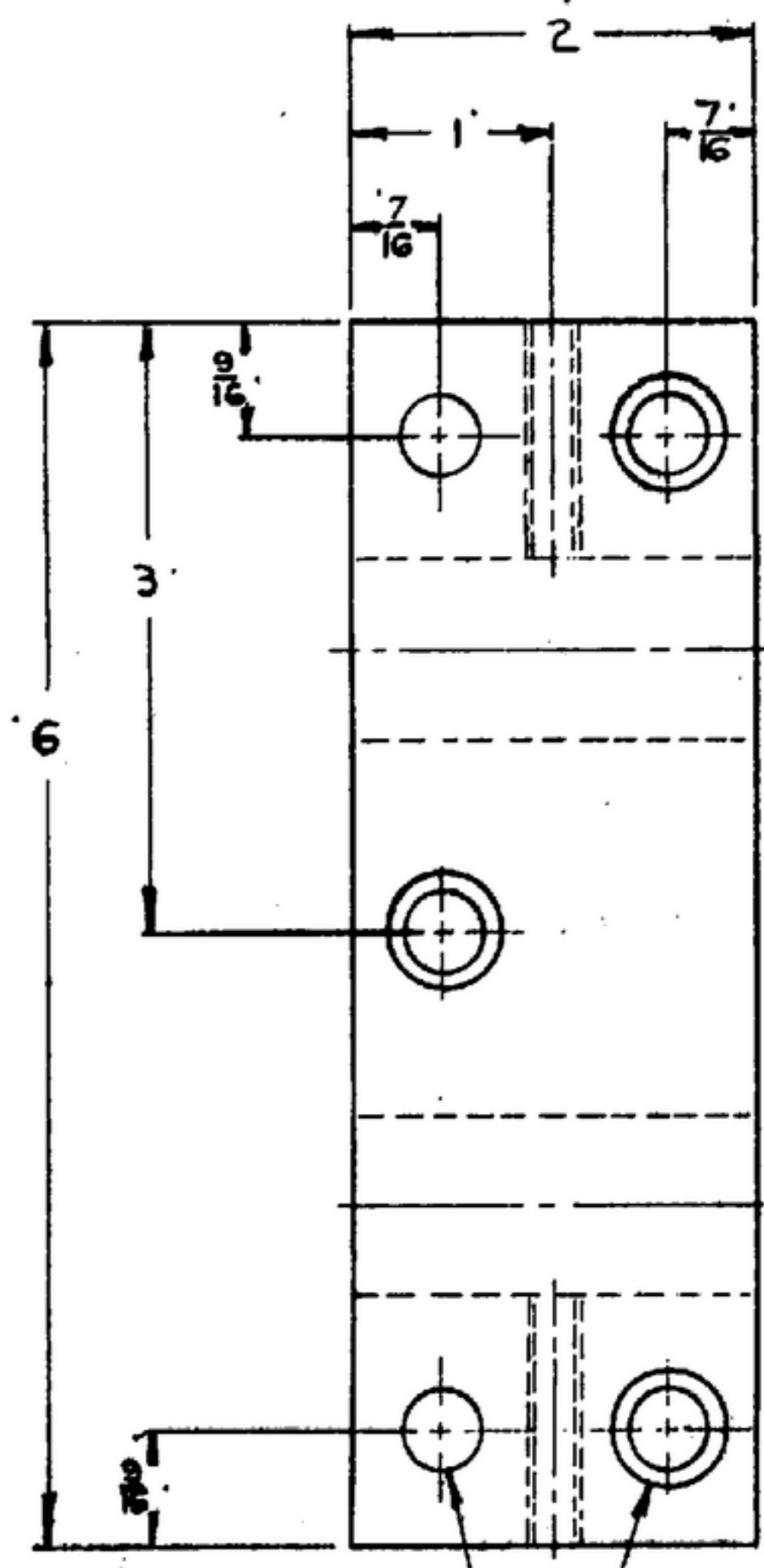
DEPARTMENT OF THE ARMY
SIGNAL CORPS ENGINEERING
LABORATORIES
FORT MONMOUTH NEW JERSEY
SM-D-57316
SHEET 1 OF 2

SYM	DESCRIPTION	DATE	APPROVAL

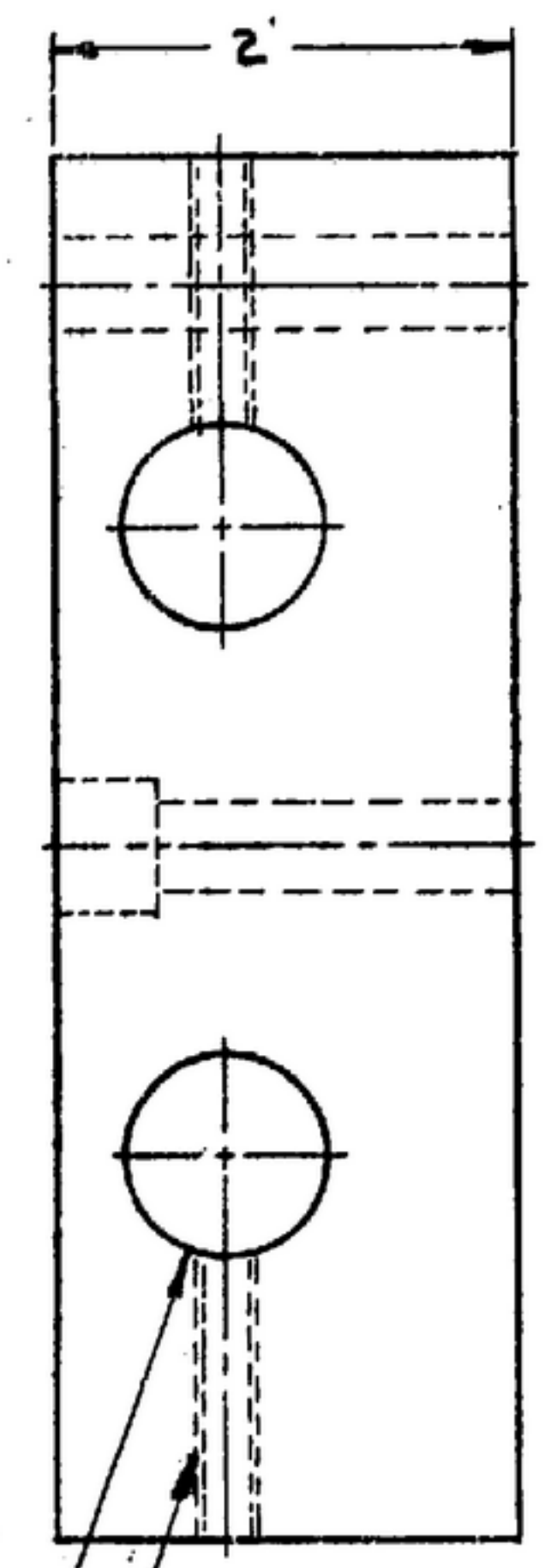
NOTE: THIS DRAWING IS THE PROPERTY OF THE GOVERNMENT AND IS LOANED TO YOU BY THE GOVERNMENT. IT IS TO BE USED ONLY FOR THE PURPOSES AUTHORIZED BY THE GOVERNMENT. IT IS TO BE RETURNED TO THE GOVERNMENT AT THE END OF THE LOAN PERIOD. IT IS NOT TO BE REPRODUCED OR TRANSMITTED IN ANY FORM OR BY ANY MEANS, ELECTRONIC OR MECHANICAL, INCLUDING PHOTOCOPYING, RECORDING, OR BY ANY INFORMATION STORAGE AND RETRIEVAL SYSTEM. WITHOUT PERMISSION IN WRITING FROM THE GOVERNMENT. THE GOVERNMENT ASSUMES NO LIABILITY FOR ANY DAMAGE TO OR LOSS OF ANYTHING WHICH MAY BE STORED IN OR TRANSMITTED BY THIS DRAWING.

THIS DRAWING IS THE PROPERTY OF THE GOVERNMENT AND IS LOANED TO YOU BY THE GOVERNMENT. IT IS TO BE USED ONLY FOR THE PURPOSES AUTHORIZED BY THE GOVERNMENT. IT IS TO BE RETURNED TO THE GOVERNMENT AT THE END OF THE LOAN PERIOD. IT IS NOT TO BE REPRODUCED OR TRANSMITTED IN ANY FORM OR BY ANY MEANS, ELECTRONIC OR MECHANICAL, INCLUDING PHOTOCOPYING, RECORDING, OR BY ANY INFORMATION STORAGE AND RETRIEVAL SYSTEM. WITHOUT PERMISSION IN WRITING FROM THE GOVERNMENT. THE GOVERNMENT ASSUMES NO LIABILITY FOR ANY DAMAGE TO OR LOSS OF ANYTHING WHICH MAY BE STORED IN OR TRANSMITTED BY THIS DRAWING.

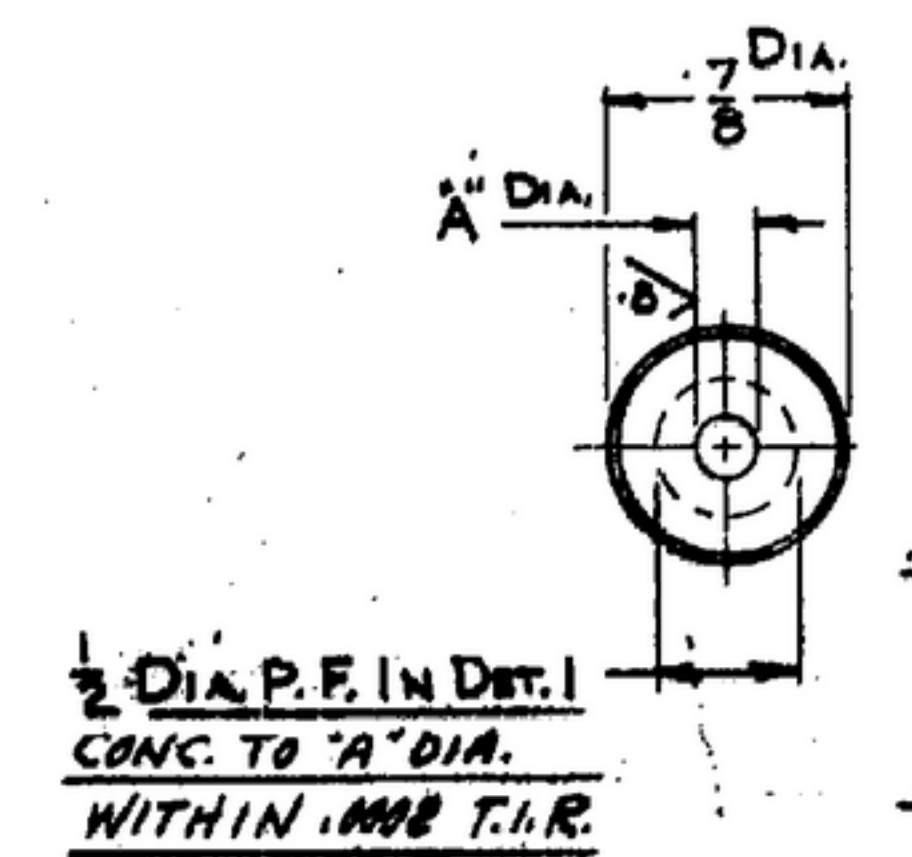
NOTE: *FOR INFORMATION ONLY, CONTRACTOR MAY AT HIS OPTION DEVIATE FROM THESE PROCESS DETAILS



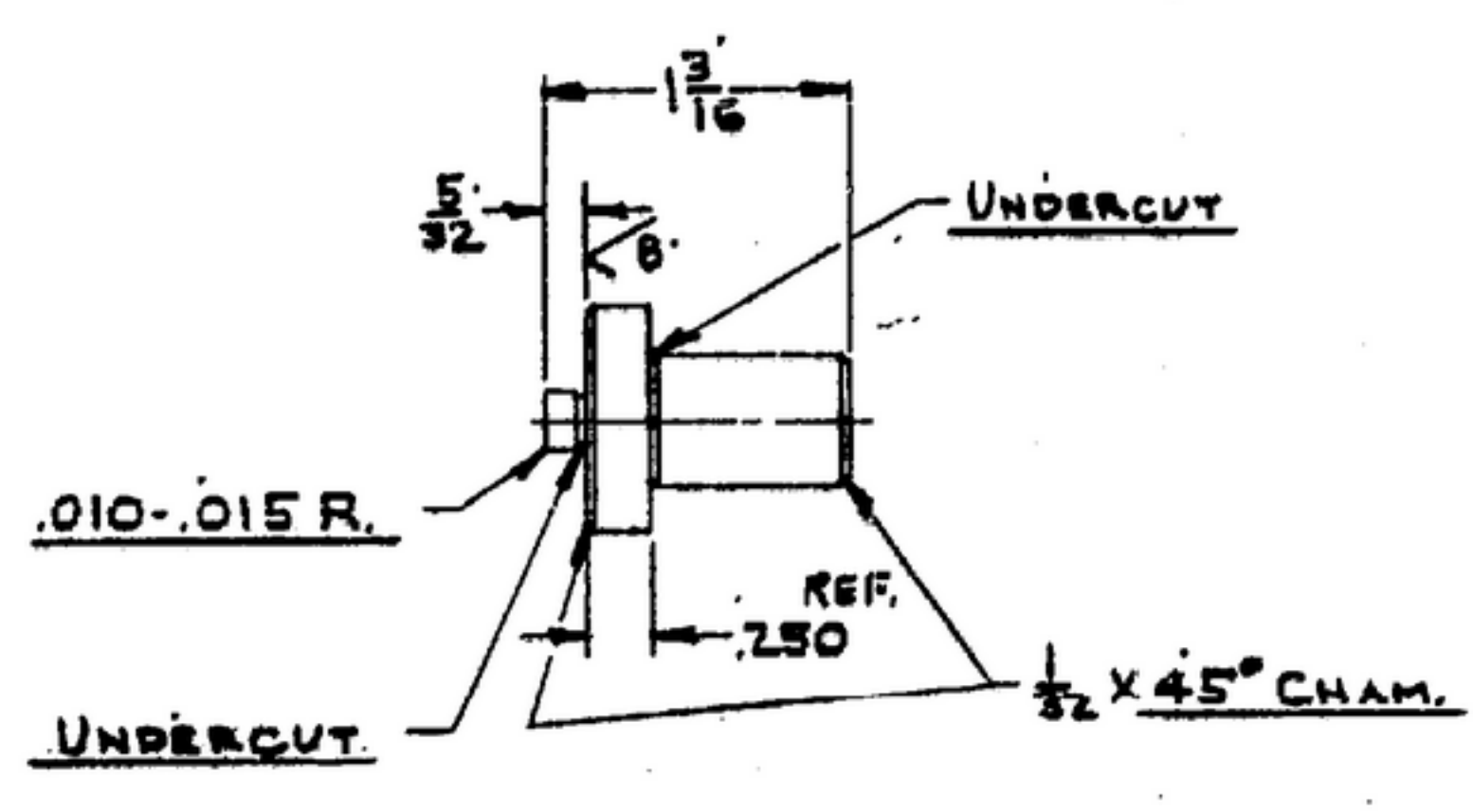
3/8 DIA. P.F. FOR DOWEL
2 HOLES
DR. E C BORE FOR 3/8-16
Sec. Hd. CAP SCR. - 3 HOLES



1/4-20 TAP - 2 HOLES
3/8 DIA. P.F. FOR DET. 9
2 HOLES - LOC. IN ASSY.

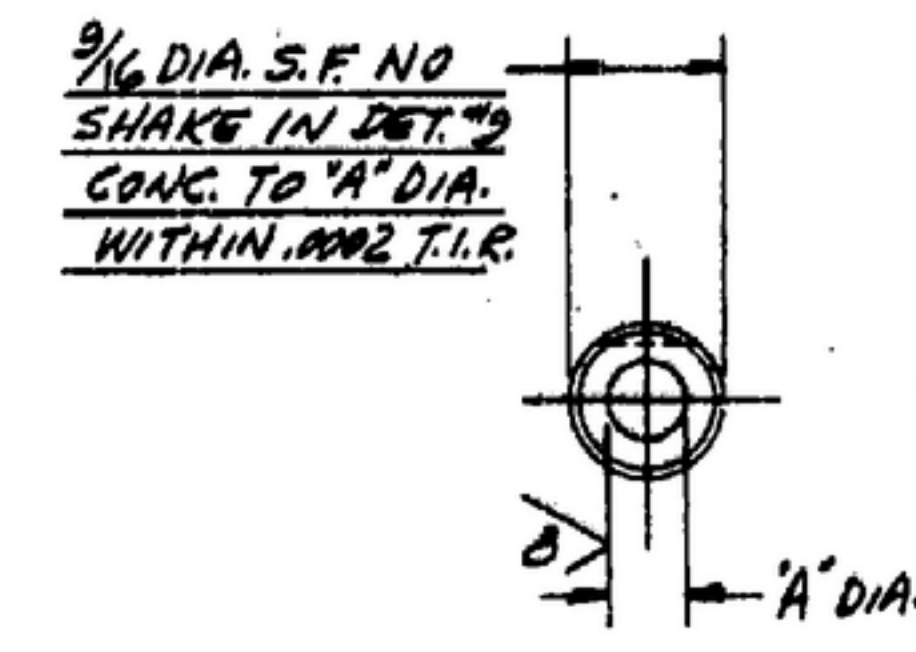


7/8 DIA. P.F. IN DET. 1
CONC. TO 'A' DIA.
WITHIN .002 T.I.R.

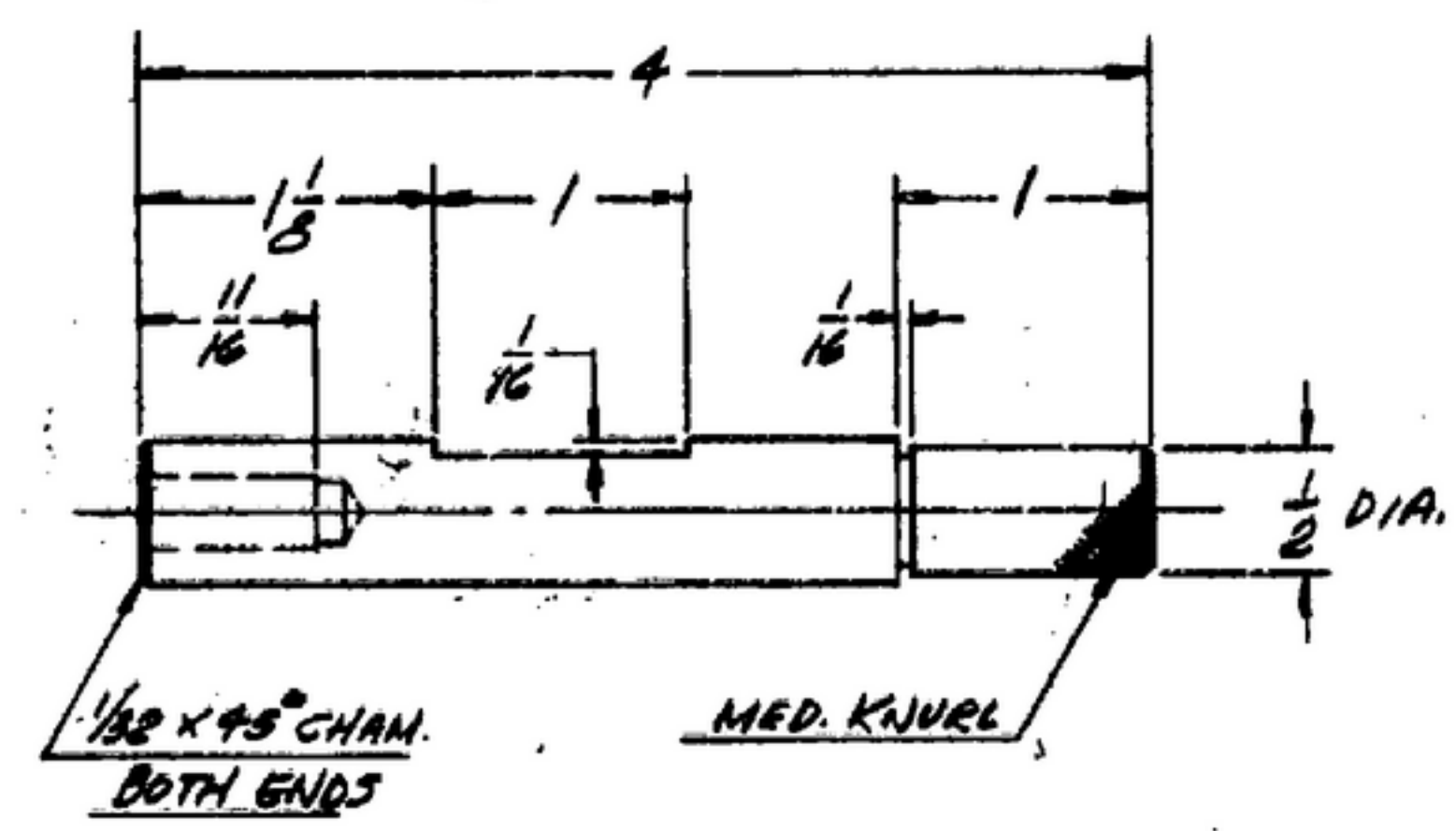


PIN
2 1 REQ. - STEEL-FS-A2 PER SPEC. ±.0003
QQ-S-00778 ROCK 'C' 62 MIN. 'A' DIA. = .2415 DIA.

PIN
5 2 REQ. - STEEL-FS-A2 PER SPEC. ±.0003
QQ-S-00778 ROCK 'C' 62 MIN. 'A' DIA. = .2187 DIA.



9/16 DIA. S.F. NO
SHAKE IN DET. 9
CONC. TO 'A' DIA.
WITHIN .002 T.I.R.



PIN
7 1 REQ. - STEEL-FS-A2 PER SPEC. QQ-S-00778
ROCK 'C' 62 MIN. 'A' DIA. = .2833 ±.0003 DIA.

PIN
8 1 REQ. - STEEL-FS-A2 PER SPEC. QQ-S-00778
ROCK 'C' 62 MIN. 'A' DIA. = .2833 ±.0003 DIA.

BLOCK
10 1 REQ. - STEEL NORMALIZED
PER SPEC. QQ-S-633.

QTY	PART NO.	DESCRIPTION	MATL.	MATL. SPEC.

UNLESS OTHERWISE SPECIFIED DIMENSIONS ARE IN INCHES TOLERANCES ON FRACTIONS DECIMALS ANGLES ±.0003		QUANTITY REQUIRED ORDER # 05719-PH-55-53	PIN GAGE To CHECK BAND WIDTH CONTROL SHAFTS IN RELATION TO MOUNTING HOLES IN I.F. SUB-CHASSIS & CHECK OVER ALL MAXIMUM DIMENSION OF CHASSIS	DEPARTMENT OF THE ARMY SIGNAL CORPS ENGINEERING LABORATORIES 77 MONMOUTH NEW JERSEY
REVIEWED PME	APPROVED M. J. A. PME	SIGNAL CORPS		
DATE 14-10-55	SCALE FULL	DATE 14-10-55	SCALE FULL	SHEET 2 OF 2